

Concord-Pro Features:

Concord-Pro is an out of the box solution, with ability to configure as per user requirements, and finding its usage in diverse avenues. These are inclusive of graphic re-alignment of land base and facilities, Data cleanup of GIS records, Data migration and performance management, amongst others. Some of the features of Concord-Pro include:

- Vector's direction is maintained
- Enables Capture of addition attributes of conflated elements
- Maintains explicit and implicit connectivity while conflating
- Enables conflation maintaining relative position with respect to landbase and other plant features
- Extensive reporting capabilities

- Platform independent architecture
- Fuzzy logic based decision support system
- Supports polygon, linear and Data point conflation
- Existing data integrity accurately maintained
- Supports multiple control sources
- Built-in Quality Control features

Contact Us

Maryland Office:

607 Smallwood Road, Rockville, MD 20850

Tel: 301 424 0090 ; Main 301 424 0785, Fax: 301 424 0378

Email: abahn@amcosvcs.com

Virginia Office:

4451 Brookfield Corporate Drive, Suite 205 Chantilly, VA 20151

Tel: 703 372 3227; Mobile 703 728 0649, Fax: 703 880 6751

Email: san.sengupta@amcosvcs.com, ashok@amcosvcs.com

American Consulting Services, Inc



Concord-Pro

*Automated GIS
Conflation tool*

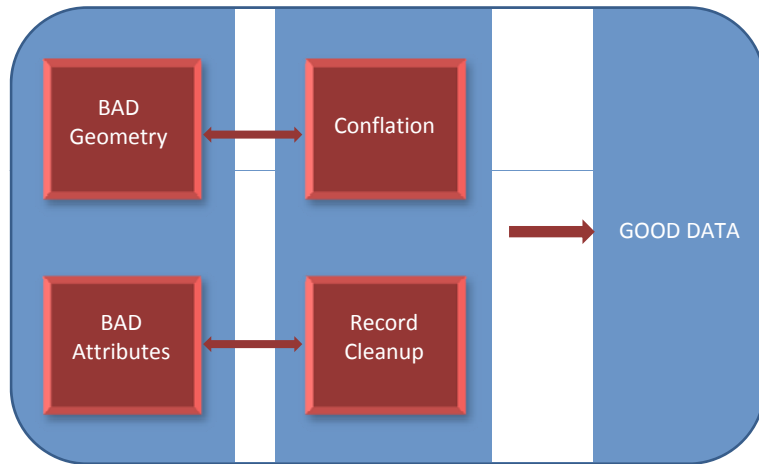
A Conflation and Data Integrity Management Solution:

Data Integrity and land base accuracy are the key factors for effective use of GIS applications. In addition, a sanitized data can be properly leveraged for applications requiring higher levels of accuracy (work management, GPS, mobile/field, routing/navigation), as well as improve the day to day operational efficiencies of design and engineering.

Data Integrity for safety and regulatory requirements:

There is a need to improve the geo-spatial accuracy of the land base and other facility data of utilities. ACS Inc brings a comprehensive solution to address this need, using its proprietary conflation tool. Our proven data conflation software solution enables utilities to align existing data with a new and more spatially accurate land base source. ACS Inc specializes in providing highly accurate conflation and realignment solutions at substantially low costs, and thereby meeting the geospatial needs of organizations of varied strengths.

Intelligent workflow propelling unmatched productivity:

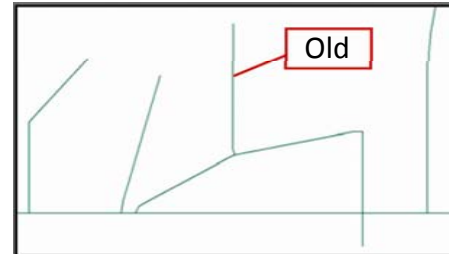


ACS Inc' conflation solution combines automation and cognitive power of domain experts to give consistent quality and unmatched performance.

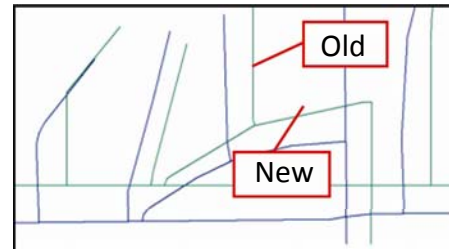
Our proprietary fuzzy logic based conflation algorithms have enabled us to achieve a high degree of re-alignment accuracy for most of the spatial data. In cases where a manual re-alignment has to be performed, ACS Inc uses software assisted heuristics for re-alignment. This process is effectively controlled using established management systems that have evolved at ACS Inc's production facilities. The advent of these systems is attributable primarily to the rich experience gained by ACS Inc, through its diverse operations of preceding two decades.

Concord-Pro has variety of applications meeting the needs of diverse sectors. Some of the areas we serve include:

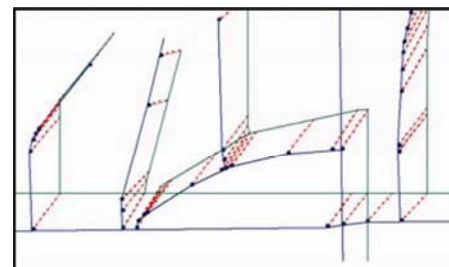
- Telecommunications
- Gas Utilities (Transmission and Distribution)
- Electrical
- Land Management



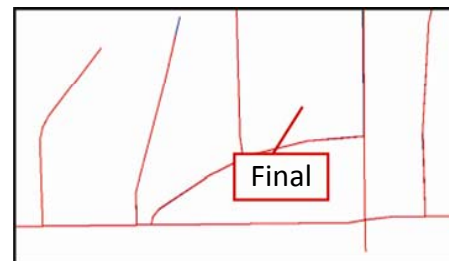
Existing old land base



Spatially accurate new land base overlaid on existing land base



Conflation control lines



Conflated data